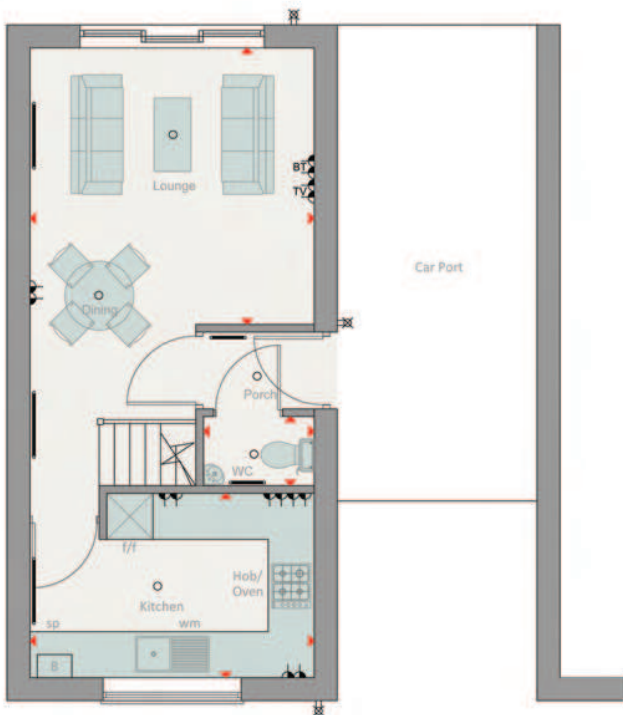


OXFORD

3 Bedroom Home



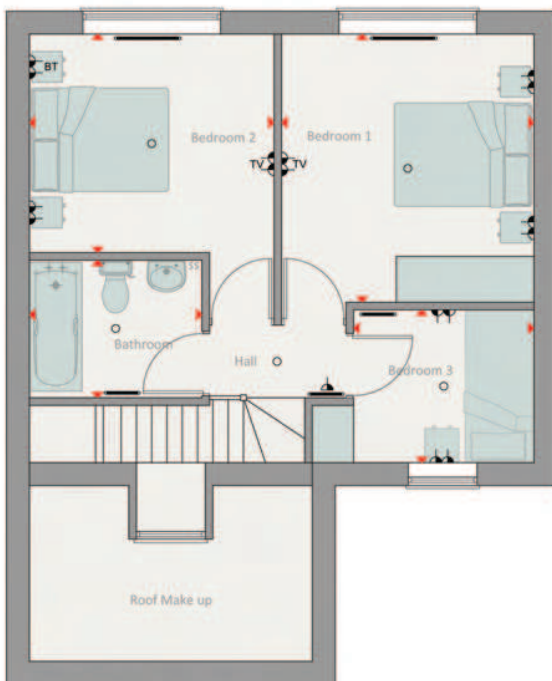
- A Lovely 3 bedroom home featuring an open plan lounge and dining room with sliding doors opening onto the Garden
- Rear Aspect Kitchen with quality appliances and fashionable units
- First Floor has three bedrooms and family bathroom fitted with bath and shower



Ground Floor

Lounge/Dining	3600 x 3550mm	11'8" x 11'6"
Kitchen	3600 x 2350mm	11'8" x 7'7"
WC	1400 x 900mm	4'6" x 3'0"

(Approximate Dimensions)



First Floor

Bedroom 1	3450 x 3250mm	11'3" x 10'7"
Bedroom 2	3150 x 2800mm	10'3" x 9'2"
Bedroom 3	2300 x 1950mm	7'5" x 6'4"
Bathroom	2200 x 1750mm	7'2" x 5'7"

(Approximate Dimensions)

KEY	○ Light Fitting	TV TV Aerial Socket	⊞ Boiler	⬮ Electric Socket	wm Washing Machine Space
	Ⓜ Telephone Point	ss Shaver Socket	ST Storage	f/f Fridge/Freezer Space	◀▶ Dimension Location
	⊞ External Light Fitting	SP Sprinkler Fittings	— Radiator		

01492 532904

info@penrhynhomes.com

www.penrhynhomes.com

IMPORTANT NOTICE: Artist Impression is for illustrative purposes only. Individual features such as windows, bricks and other materials may vary, as may heating and electrical layouts. Floor plans are to give a general indication of the floor layout only and dimensions may vary slightly. Dimensions should not be used for carpet and furniture. For further information please contact our Sales Advisor for details of the treatments specified for individual plots. Artist impressions and dimensions are not intended to form part of any contract or warranty. Furniture and landscaping is shown for illustrative purposes only.