

Plot 3 - Woodland Close



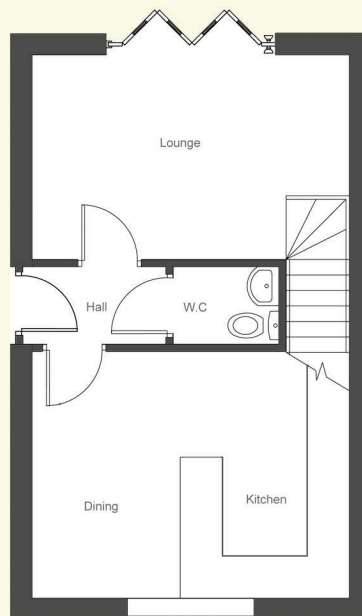
Ground Floor Dimensions

- *Lounge 14"8" x 9"5" (4.5m x 2.9m)
- *Kitchen/Dining 14"8" x 11"5" (4.5m x 3.5m)
- *Hall 6"6" x 3"6" (2.0m x 1.1m)
- *W.C. 4"9" x 3"6" (1.5m x 1.1m)

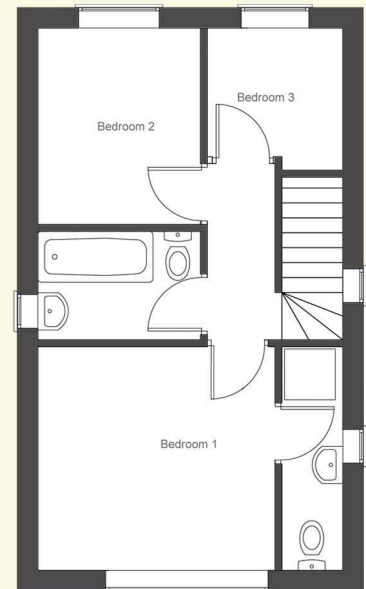
First Floor Dimensions

- *Bedroom 1 11"5" x 10"8" (3.5m x 3.3m)
- *Bedroom 2 9"5" x 7"8" (2.9m x 2.4m)
- *Bedroom 3 6"6" x 7"9" (2.1m x 2.0m)
- *W.C. 7"8" x 5"2" (2.4m x 1.6m)

Ground Floor



First Floor



One Call **01492 531267**
 One Click **www.penrhynhomes.com**
to find your dream home

PLEASE NOTE: These dimensions are for guide only, subject to terms and conditions.
 Please contact us for more details.

